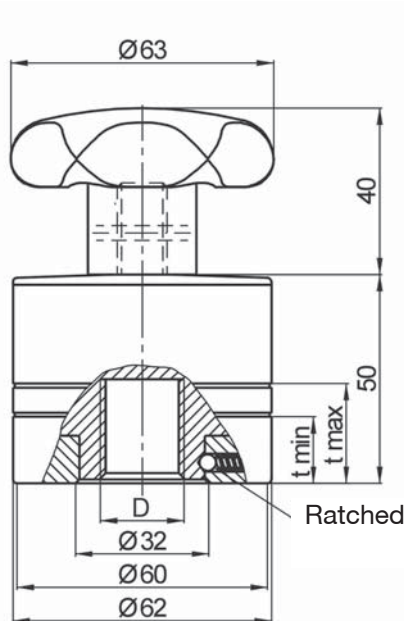
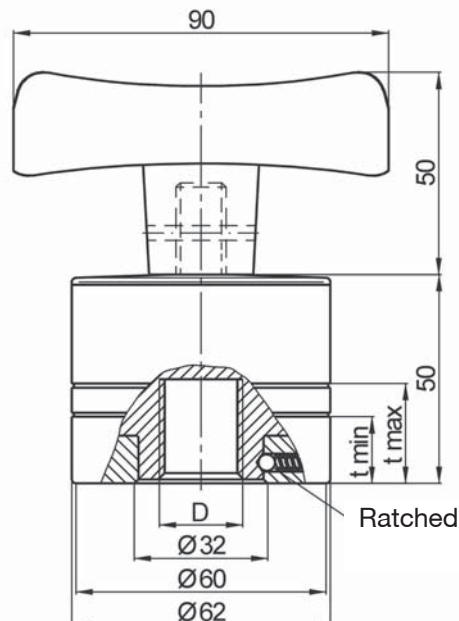


# Mechanical power clamping nut I Series MCA-S/MCA-T

/// simple, manual operating with handle /// fast infeed motion due to automatic change over



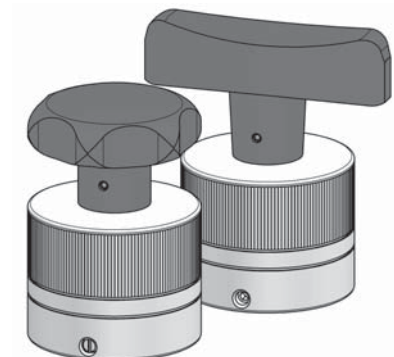
clamping nut MCA-S  
with star grip



clamping nut MCA-T  
with T-grip

Technical data and dimensions [mm]:  
length dimensions according to DIN ISO 2768 mH

Series	nominal clamping force		max static load	screw in depth		weight approx.
	thread	[kN]		t <sub>min</sub>	t <sub>max</sub>	
MCA-S	M 10	40	50	16	24	1,0
MCA-T	M 12		70			
	M 16		120			
	M 20		120			

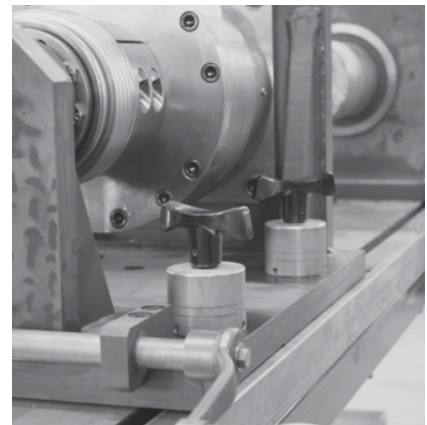


## Notice:

Property class of threaded bolt should be at least Q10.9. Sizes of thread larger than M16, should use a property class of Q12.9, or the max. static load must be reduced. For optical control of actual screw-in depth of the T-bolt two grooves have been provided on the housing circumference matching t<sub>min</sub> and t<sub>max</sub>. When laying out the actual screw-in depth of the threaded bolt, the necessary stroke must be considered i. e. the max. specified screw-in depth must be reduced at least by amount the stroke.

## Application example:

MCA-T-clamping nut for adjustment of test bench sliding table



Ordering example: MCA-S - M 16 / MCA-T - M 20