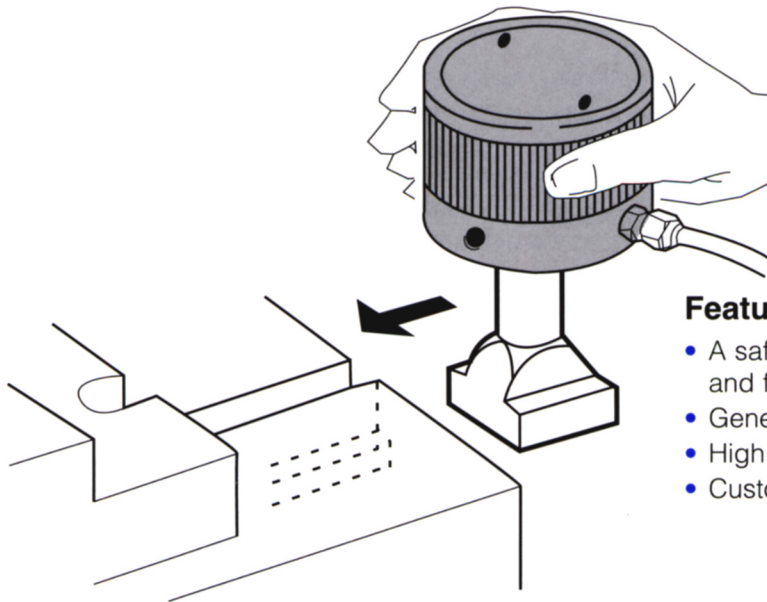


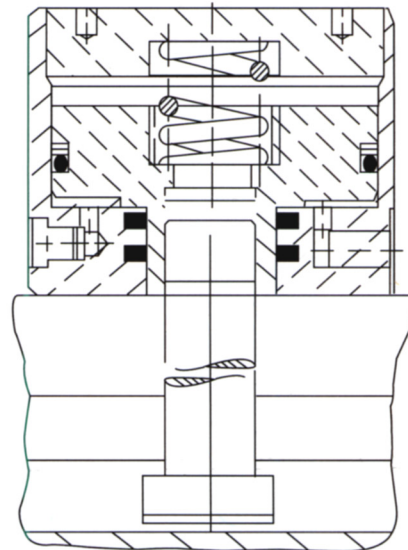
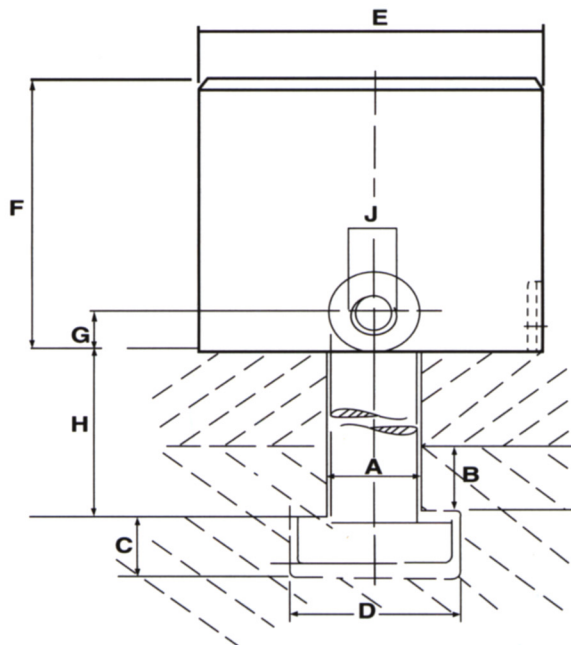
## T-Bolt Clamp



### Features

- A safe, quick and simple way to clamp dies, work pieces and fixtures
- Generous clamping stroke
- High Clamp force at low operating pressure
- Custom T-bolt configurations available

Clamp Model	Recommended T-Slot Size
HTB-40	1/2" - 3/4"
HTB-63	3/4" - 7/8"
HTB-100	7/8" - 1"
HTB-160	1-1/4" - 1-1/2"



Model No.	Clamp Force	Operating Pressure	Stroke "S"	a	b	c	d	E	F	G	H	J
HTB-40	4.4 tons	2900 psi	0.32"	*	*	*	*	2.68"	2.52"	0.59"	*	G <sup>1</sup> / <sub>4</sub>
HTB-60	7 tons	2900 psi	0.32"	*	*	*	*	3.27"	3.30"	0.59"	*	G <sup>1</sup> / <sub>4</sub>
HTB-100	11 tons	2900 psi	0.32"	*	*	*	*	3.94"	3.30"	0.59"	*	G <sup>1</sup> / <sub>4</sub>
HTB-160	18 tons	2900 psi	0.32"	*	*	*	*	5.51"	3.54"	0.59"	*	G <sup>1</sup> / <sub>4</sub>

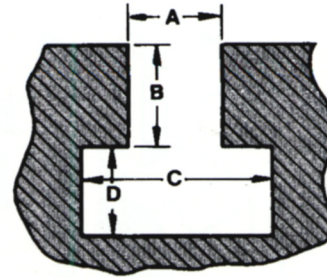
\* Customer specified

## T-Bolt Clamp

### Operating Procedures:

#### To Clamp

1. Visually inspect clamp and T-bolt-for obvious defects. Clean off any debris or chips that may be in the T-slot or on the die shoe surface.
2. Place clamp and T-bolt into T-slot.
3. Push clamp and T-bolt assembly forward (toward die) as far as possible to ensure proper seating. Make certain that the die shoe surface is free of debris and lubricants.
4. Activate hydraulic system.
5. Monitor hydraulic pressure during press operation.



**Note:** Please give depth of throat dimension "B" even if using a standard T-slot.

### ORDERING INFORMATION

When ordering or requesting a quote, please take a few minutes to complete the following data sheet.

#### Necessary Data

Range of die shoe thickness: \_\_\_\_\_ min. \_\_\_\_\_ max.

Press tonnage: \_\_\_\_\_

Weight of dies: \_\_\_\_\_ top \_\_\_\_\_ bottom

Clearance between ram and bolster (shut height): \_\_\_\_\_

#### T-Slot Dimensions

If standard: \_\_\_\_\_

*If not-standard:* Width of throat (A) \_\_\_\_\_  
 Depth of throat (B) \_\_\_\_\_  
 Width of head (C) \_\_\_\_\_  
 Depth of head (D) \_\_\_\_\_

### STANDARD T-SLOT DIMENSIONS

Diameter of T-Bolt	Width of Throat A	Depth of Throat B		Head Space Dimensions and Tolerances					
				Width C			Width D		
		Maximum	Minimum	Maximum (Basic)	Tolerance (Minus)	Minimum	Maximum (Basic)	Tolerance (Minus)	Minimum
1/2	9/16	11/16	5/16	31/32	0.063	29/32	25/64	0.031	23/64
5/8	11/16	7/8	7/16	1-1/4	0.063	1-3/16	31/64	0.031	29/64
3/4	13/16	1-1/16	9/16	1-15/32	0.094	1-3/8	5/8	0.031	19/32
1	1-1/16	1-1/4	3/4	1-27/32	0.094	1-3/4	53/64	0.047	25/32
1-1/4	1-5/16	1-9/16	1	2-7/32	0.094	2-1/8	1-3/32	0.063	1-1/32
1-1/2	1-9/16	1-15/16	1-1/4	2-21/32	0.094	2-9/16	1-11/32	0.063	1-9/32