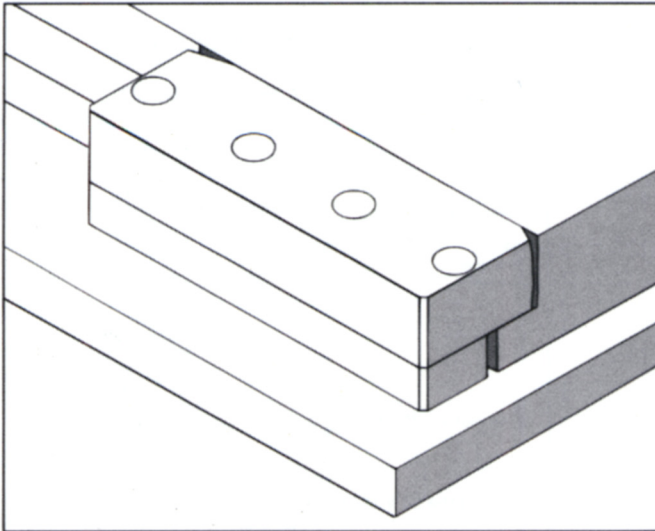


## Hydraulic Clamping Strip



### Area of application

The hydraulic clamping strip type HSL is designed for smaller and medium-sized presses exerting a force of up to 800 tons. It is suitable both for bottom and top die clamping, for dies with straight clamping edges.

The clamping strip is installed in a fixed position. The dies used must all have the same base dimensions.

The clamp unit places little demands on the periphery of the machine, and is therefore suitable both for initial installation and for retro-fits.

### Mode of operation

Several single-acting hydraulic cylinders, hydraulically controlled, transmit the required clamping force to the die.

Releasing the clamp is done by shifting the hydraulic valve. The clamp pistons retract via spring force.

### Application of the clamping force through:

- clamping stroke of the hydraulic piston

### Distinguishing features

The hydraulically operated clamping strip directly produces the clamping force required. The hydraulic pressure must be maintained throughout the clamping process (optional equipment with releasing non-return valves and pressure switches recommended).

By means of the optional insertion of ball castors, the clamping strip can take over the lateral die guidance function. The compact construction dimensions enable it to be accommodated in limited space applications.

### Electrical control of the following:

- Pressure control by means of pressure switches on the hydraulic unit is advisable.

### Technical data

The clamping strip is mounted on a base plate which is customer specified and is available in 5 different lengths (other lengths available on request).

The hydraulic clamping strip can be used at operating temperatures up to 135°C and at a maximum operating pressure of 400 bar.

The connections to the hydraulic lines may be at the side or at the rear, as required.

### Advantages

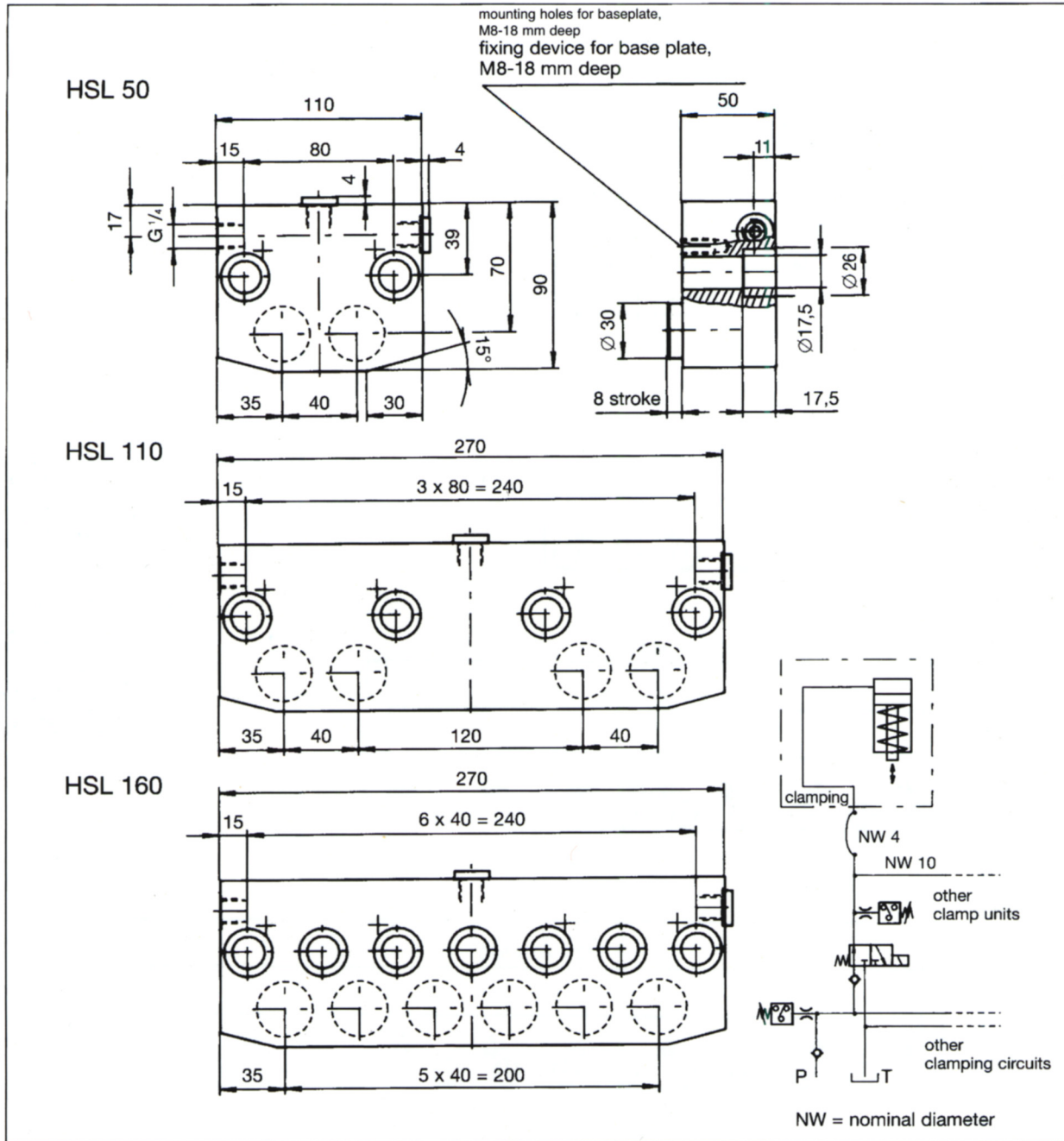
- Very low installation cost
- Completely hydraulic operation
- Universal use by varying the base plates
- High force density
- Central control
- High clamping force
- Low maintenance costs
- Superior corrosion protection
- Low construction height

### Construction

The clamping strip has a nickel-plated housing and a nickel-plated base plate.

1.400

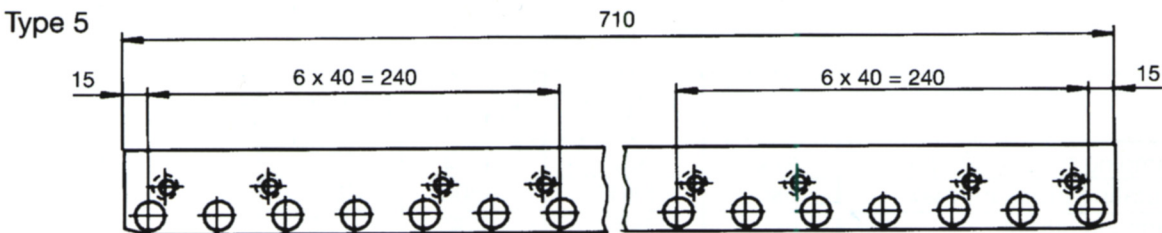
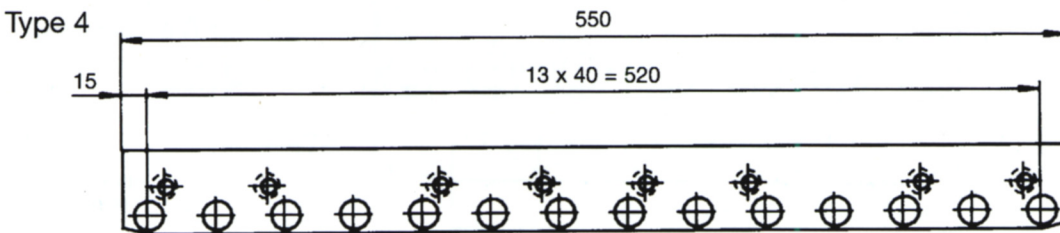
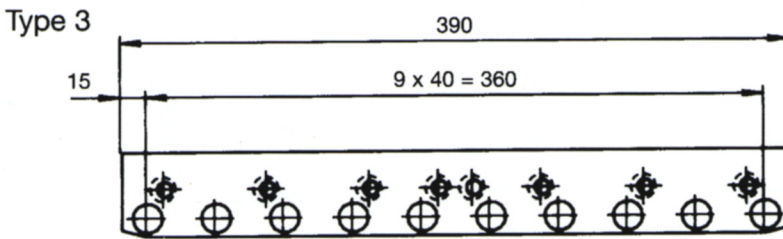
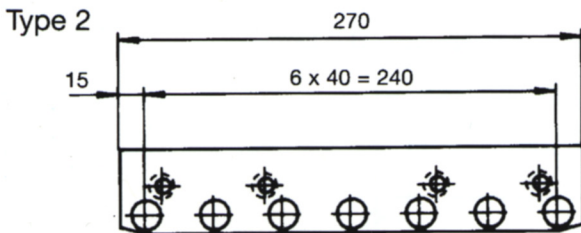
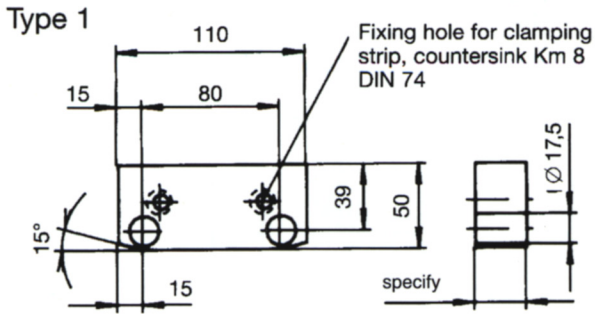
# Hydraulic Clamping Strip



The company reserves the right to make technical changes.

Type		HSL 50	HSL 110	HSL 160
Clamping for at 5800 psi	tons	6.2	12.3	18.5
Operating pressure max.	psi	5800	5800	5800
Clamping stroke	in.	0.32	0.32	0.32
Hydraulic connection		BSPP 1/4	BSPP 1/4	BSPP 1/4
Oil requirement	cu. in.	0.70	1.37	2.05
Oil viscosity		25-60 cST/40°C		
Oil filter		20-25µm		

**Base Plates**



The company reserves the right to make technical changes.