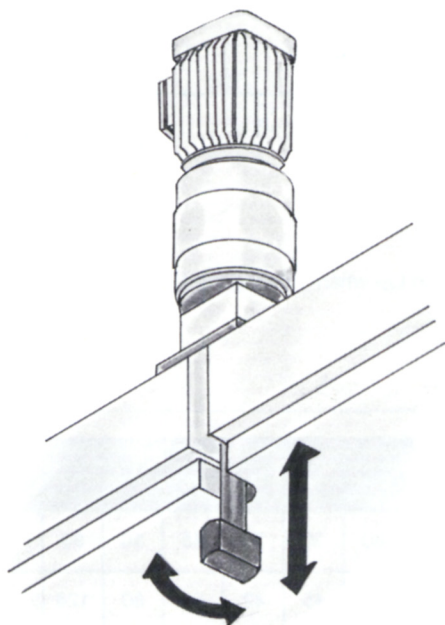
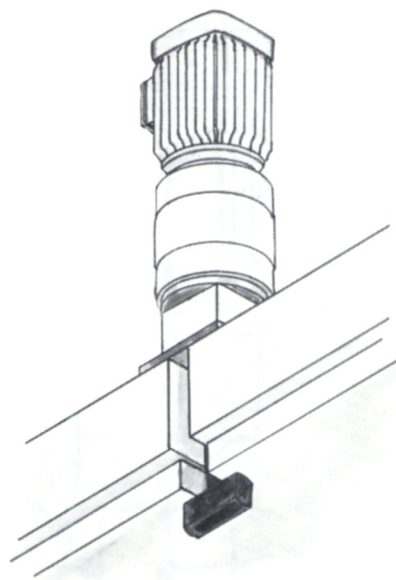


Electro-Mechanical Turn-Sink Clamp

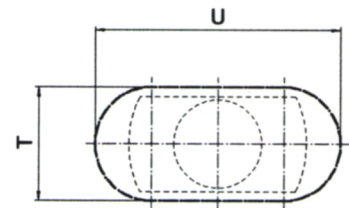
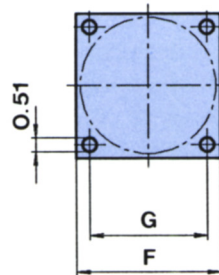
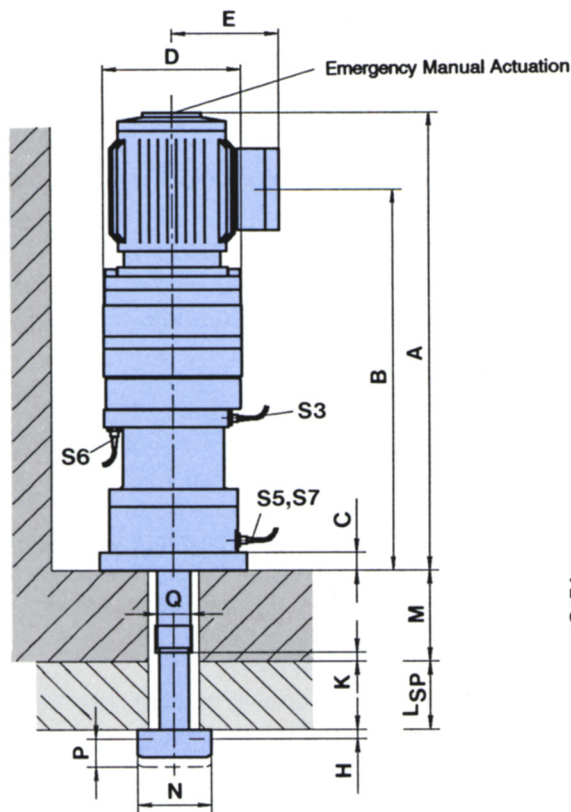
Optima's EDH Turn-Sink Clamp represents the culmination of 25 years experience in the tool clamping field. These electro-mechanical units offer the highest degree of operational safety with unmatched reliability and clamping versatility. The unique advantages of these self contained units (no external power sources, i.e. hydraulics, required) make them ideal for both OEM and retrofit applications.



Features:

- Compact Design
- High Clamp Forces
- Continuous Clamp Force Monitoring
- Simple Installation (2 cables) - No external power source required (no lines, valves, pumps, etc.)
- High Clamping Tolerance
- Mechanically Self Locking (power is only required during clamp/unclamp operation)
- Trouble Free Operation
- High Operational Safety
- Emergency Manual Operation
- Electrical Monitoring of All Important Functions

Technical Data:



PROXIMITY SWITCH FUNCTION

- S3 = Tie-Rod Retracted
- S5 = Tie-Rod In Clamped Position
- S6 = Continuous Clamp Force Monitoring
- S7 = Tie-Rod In Unclamped Position

Cutout Dimensions for Tie-Rod

Type	min.	max.	U
EDH-60	1.77	1.97	2.75
EDH-120	1.77	1.97	3.54
EDH-240	2.36	2.75	4.33

Dimensions shown in inches

TYPE	Clamp force (tons)	Holding capacity (tons)	L SP*		Motor-power (hp)	A	B	C	D	E	F	G	H	K	M* (min)	N	P	Q	Weight (lbs.)
			min	max															
EDH 60	6.6	11	0.39	2.36	0.75	18.97	15.24	0.79	5.90	4.02	6.30	5.12	0.12	0.08	1.30	2.48	0.98	1.57	77
EDH 120	13.2	22	0.39	2.76	1.00	20.55	16.25	0.79	6.30	4.88	6.30	5.12	0.12	0.08	1.50	3.15	1.18	1.57	88
EDH 240	26.4	44	0.39	3.15	2.00	23.35	19.06	0.79	6.30	4.88	6.30	5.12	0.12	0.08	2.28	3.86	1.97	2.17	88

* Customer specified, L SP represents maximum die shoe thickness range

Motors:

Standard 3-phase motors
Voltage 460V/60 Hz
DF 3%-15%
n = 3000 rpm

Limit Switches:

4 "Balluff" proximity switches
Voltage 24V
Cable length 10 ft.

Temperature:

Applications up to 160°F

Mounting:

For installation please use
4 socked head cap screws
(1/2", Grade 8)